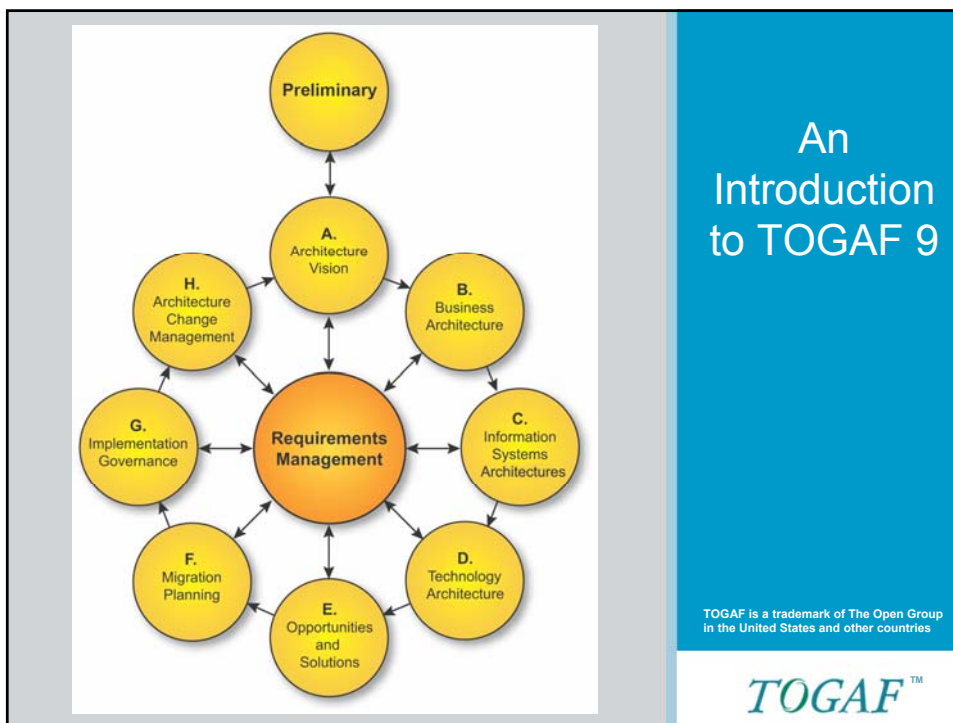


© 2009 The Open Group, All Rights Reserved



## Audience

- The audience for this presentation is
  - Enterprise architects, business architects, data architects, systems architects, solutions architects and senior managers seeking a first introduction to the new features in TOGAF 9
  - A prior knowledge of TOGAF 8.1.1 is presumed

Slide 3 of 37

TOGAF™

© 2009 The Open Group, All Rights Reserved

## Agenda

- What is TOGAF ?
- TOGAF 9 Overview

Slide 4 of 37

TOGAF™

## Agenda

- What is TOGAF?
- TOGAF 9 Overview

*TOGAF™*

*Slide 5 of 37*




© 2009 The Open Group, All Rights Reserved

## What is TOGAF?

- The de-facto standard for Enterprise Architecture
- A global standard – developed reviewed and approved by a collaborative of 300 members from many of the world's leading IT customer and vendors
- Based in best practices

*TOGAF™*

*Slide 6 of 37*



## Agenda

- What is TOGAF?
- TOGAF 9 Overview

*TOGAF™*

*Slide 7 of 37*




© 2009 The Open Group, All Rights Reserved

## Key Features

- An evolution from TOGAF 8
- Greater Usability
- More Focus on Holistic Enterprise Change
- More Consistency of Output

*TOGAF™*

*Slide 8 of 37*



## An Evolution

- Preserves the existing investment in TOGAF 8.1.1
  - The core method
  - Existing investment in People
    - Knowledge and skills
  - Existing investment in Tools
- Adding further detail and clarification to what has already been proven
- Restructuring for better usability

Slide 9 of 37

TOGAF™

© 2009 The Open Group, All Rights Reserved

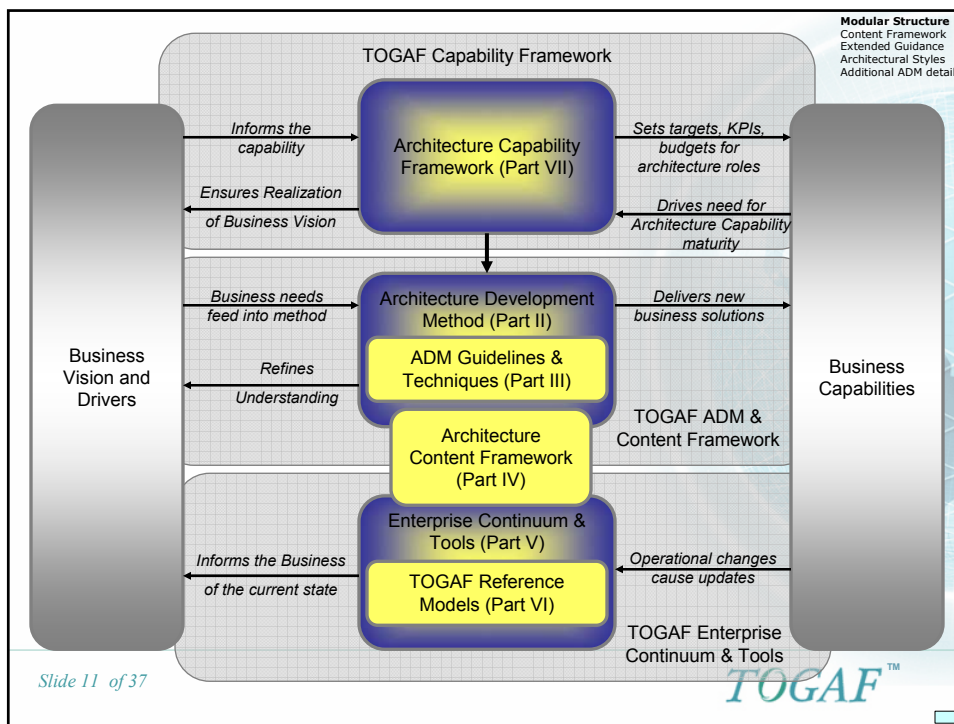
## What's New?

- Modular Structure
- Content Framework
- Extended Guidance on using TOGAF
- Explicit Consideration of Architectural Styles
- Further detail added to the Architecture Development Method (ADM)

Slide 10 of 37

TOGAF™





© 2009 The Open Group, All Rights Reserved

## Modular Structure

- Logically segmented structure
  - See next slides
- Promotes greater usability
- Encourages Incremental adoption
- Supports Evolutionary release management for TOGAF

**Modular Structure**  
Content Framework  
Extended Guidance  
Architectural Styles  
Additional ADM detail

TOGAF™

Slide 12 of 37

## Table of Contents

**Modular Structure**  
 Content Framework  
 Extended Guidance  
 Architectural Styles  
 Additional ADM detail

<b>Part I - Introduction</b>	<div style="border: 1px solid black; border-radius: 10px; padding: 2px; display: inline-block;">Based on 8.1.1 Content with new material added</div>	
Preface, Executive Overview, Core Concepts, Definitions and Release Notes		
<b>Part II - Architecture Development Method</b>		<div style="border: 1px solid black; border-radius: 10px; padding: 2px; display: inline-block;">The essence of 8.1.1 retained plus more detail</div>
Introduction to ADM ADM Phase Narratives		
<b>Part III - ADM Guidelines and Techniques</b>		<div style="border: 1px solid black; border-radius: 10px; padding: 2px; display: inline-block;">Derived from 8.1.1 with new materials</div>
Guidelines for Adapting the ADM Process Techniques for Architecture Development		
<b>Part IV - Architecture Content Framework</b>		<div style="border: 1px solid black; border-radius: 10px; padding: 2px; display: inline-block;">New for TOGAF 9</div>
Content Metamodel Architectural Artifacts Architecture Deliverables Building Blocks		
<b>Part V - Enterprise Continuum and Tools</b>	<div style="border: 1px solid black; border-radius: 10px; padding: 2px; display: inline-block;">Substantively Revised</div>	
Enterprise Continuum Architecture Partitioning Architecture Repository Tools for Architecture Development		
<b>Part VI - Reference Models</b>	<div style="border: 1px solid black; border-radius: 10px; padding: 2px; display: inline-block;">Derived from 8.1.1 Enterprise Continuum</div>	
Foundation Architecture: Technical Reference Model Integrated Information Infrastructure Reference Model		
<b>Part VII - Architecture Capability Framework</b>	<div style="border: 1px solid black; border-radius: 10px; padding: 2px; display: inline-block;">Derived from 8.1.1 Resource Base</div>	
Architecture Board Architecture Compliance Architecture Contracts Architecture Governance Architecture Maturity Models Architecture Skills Framework		

Slide 13 of 37

TOGAF™

© 2009 The Open Group, All Rights Reserved

## Part I: Introduction

**Modular Structure**  
 Content Framework  
 Extended Guidance  
 Architectural Styles  
 Additional ADM detail

<b>Part I - Introduction</b>	<ul style="list-style-type: none"> <li>Based on TOGAF 8.1.1 but reflecting the content of TOGAF 9, with additional enhancements</li> <li>Includes new “Core Concepts”</li> <li>Includes formal “Definitions”</li> <li>Includes release notes</li> </ul>
Preface, Executive Overview, Core Concepts, Definitions and Release Notes	
<b>Part II - Architecture Development Method</b>	
Introduction to ADM ADM Phase Narratives	
<b>Part III - ADM Guidelines and Techniques</b>	
Guidelines for Adapting the ADM Process Techniques for Architecture Development	
<b>Part IV - Architecture Content Framework</b>	
Content Metamodel Architectural Artifacts Architecture Deliverables Building Blocks	
<b>Part V - Enterprise Continuum and Tools</b>	
Enterprise Continuum Architecture Partitioning Architecture Repository Tools for Architecture Development	
<b>Part VI - Reference Models</b>	
Foundation Architecture: Technical Reference Model Integrated Information Infrastructure Reference Model	
<b>Part VII - Architecture Capability Framework</b>	
Architecture Board Architecture Compliance Architecture Contracts Architecture Governance Architecture Maturity Models Architecture Skills Framework	

Slide 14 of 37

TOGAF™

## Part II: Architecture Development Method

**Modular Structure**  
 Content Framework  
 Extended Guidance  
 Architectural Styles  
 Additional ADM detail

<b>Part I - Introduction</b>
Preface, Executive Overview, Core Concepts, Definitions and Release Notes
<b>Part II - Architecture Development Method</b>
Introduction to ADM
ADM Phase Narratives
<b>Part III - ADM Guidelines and Techniques</b>
Guidelines for Adapting the ADM Process
Techniques for Architecture Development
<b>Part IV - Architecture Content Framework</b>
Content Metamodel
Architectural Artifacts
Architecture Deliverables
Building Blocks
<b>Part V - Enterprise Continuum and Tools</b>
Enterprise Continuum
Architecture Partitioning
Architecture Repository
Tools for Architecture Development
<b>Part VI - Reference Models</b>
Foundation Architecture: Technical Reference Model
Integrated Information Infrastructure Reference Model
<b>Part VII - Architecture Capability Framework</b>
Architecture Board
Architecture Compliance
Architecture Contracts
Architecture Governance
Architecture Maturity Models
Architecture Skills Framework

- The *core* of TOGAF
- The essence of the TOGAF 8.1.1 ADM is retained in TOGAF 9 with the familiar “crop circle” and structure
- The TOGAF ADM Phase Inputs and Outputs chapter has been moved to Part IV: Architecture Content Framework
- Additional content is added to each ADM Phase

TOGAF™

Slide 15 of 37

© 2009 The Open Group, All Rights Reserved

## Part III: ADM Guidelines & Techniques

**Modular Structure**  
 Content Framework  
 Extended Guidance  
 Architectural Styles  
 Additional ADM detail

<b>Part I - Introduction</b>
Preface, Executive Overview, Core Concepts, Definitions and Release Notes
<b>Part II - Architecture Development Method</b>
Introduction to ADM
ADM Phase Narratives
<b>Part III - ADM Guidelines &amp; Techniques</b>
Guidelines for Adapting the ADM Process
Techniques for Architecture Development
<b>Part IV - Architecture Content Framework</b>
Content Metamodel
Architectural Artifacts
Architecture Deliverables
Building Blocks
<b>Part V - Enterprise Continuum &amp; Tools</b>
Enterprise Continuum
Architecture Partitioning
Architecture Repository
Tools for Architecture Development
<b>Part VI - Reference Models</b>
Foundation Architecture: Technical Reference Model
Integrated Information Infrastructure Reference Model
<b>Part VII - Architecture Capability Framework</b>
Architecture Board
Architecture Compliance
Architecture Contracts
Architecture Governance
Architecture Maturity Models
Architecture Skills Framework

- A collection of guidelines and techniques for use in applying TOGAF and the ADM
- Derived from the 8.1.1 Resource Base in part, plus additional new materials:  
e.g., Iteration, Stakeholder Management, SOA, Risk management, Capability based planning, Business Transformation Readiness Assessment, ADM support techniques, etc

TOGAF™

Slide 16 of 37



## Part IV: Architecture Content Framework

**Modular Structure**  
 Content Framework  
 Extended Guidance  
 Architectural Styles  
 Additional ADM detail

<b>Part I - Introduction</b>
Preface, Executive Overview, Core Concepts, Definitions and Release Notes
<b>Part II - Architecture Development Method</b>
Introduction to ADM
ADM Phase Narratives
<b>Part III - ADM Guidelines and Techniques</b>
Guidelines for Adapting the ADM Process
Techniques for Architecture Development
<b>Part IV - Architecture Content Framework</b>
Content Metamodel
Architectural Artifacts
Architecture Deliverables
Building Blocks
<b>Part V - Enterprise Continuum and Tools</b>
Enterprise Continuum
Architecture Partitioning
Architecture Repository
Tools for Architecture Development
<b>Part VI - Reference Models</b>
Foundation Architecture: Technical Reference Model
Integrated Information Infrastructure Reference Model
<b>Part VII - Architecture Capability Framework</b>
Architecture Board
Architecture Compliance
Architecture Contracts
Architecture Governance
Architecture Maturity Models
Architecture Skills Framework

- New for TOGAF 9
- This part describes the TOGAF Content Framework, describing:
  - a structured metamodel for architectural artifacts,
  - use of architecture building blocks
  - an overview of typical architecture deliverables

Slide 17 of 37 TOGAF™

© 2009 The Open Group, All Rights Reserved

## Part V: Enterprise Continuum & Tools

**Modular Structure**  
 Content Framework  
 Extended Guidance  
 Architectural Styles  
 Additional ADM detail

<b>Part I - Introduction</b>
Preface, Executive Overview, Core Concepts, Definitions and Release Notes
<b>Part II - Architecture Development Method</b>
Introduction to ADM
ADM Phase Narratives
<b>Part III - ADM Guidelines and Techniques</b>
Guidelines for Adapting the ADM Process
Techniques for Architecture Development
<b>Part IV - Architecture Content Framework</b>
Content Metamodel
Architectural Artifacts
Architecture Deliverables
Building Blocks
<b>Part V - Enterprise Continuum and Tools</b>
Enterprise Continuum
Architecture Partitioning
Architecture Repository
Tools for Architecture Development
<b>Part VI - Reference Models</b>
Foundation Architecture: Technical Reference Model
Integrated Information Infrastructure Reference Model
<b>Part VII - Architecture Capability Framework</b>
Architecture Board
Architecture Compliance
Architecture Contracts
Architecture Governance
Architecture Maturity Models
Architecture Skills Framework

- Substantially revised
- The reference models are moved to Part VI
- New content added on Architecture Partitioning and the Architecture Repository
- The SIB is removed

Slide 18 of 37 TOGAF™

## Part VI: Reference Models

**Modular Structure**  
 Content Framework  
 Extended Guidance  
 Architectural Styles  
 Additional ADM detail

<b>Part I - Introduction</b>
Preface, Executive Overview, Core Concepts, Definitions and Release Notes
<b>Part II - Architecture Development Method</b>
Introduction to ADM
ADM Phase Narratives
<b>Part III - ADM Guidelines and Techniques</b>
Guidelines for Adapting the ADM Process
Techniques for Architecture Development
<b>Part IV - Architecture Content Framework</b>
Content Metamodel
Architectural Artifacts
Architecture Deliverables
Building Blocks
<b>Part V - Enterprise Continuum and Tools</b>
Enterprise Continuum
Architecture Partitioning
Architecture Repository
Tools for Architecture Development
<b>Part VI - Reference Models</b>
Foundation Architecture: Technical Reference Model
Integrated Information Infrastructure Reference Model
<b>Part VII - Architecture Capability Framework</b>
Architecture Board
Architecture Compliance
Architecture Contracts
Architecture Governance
Architecture Maturity Models
Architecture Skills Framework

- Substantially revised
- The Reference models from TOGAF 8.1.1 have been moved to their own Part
- The TRM is now contained in a single chapter

TOGAF™

Slide 19 of 37

© 2009 The Open Group, All Rights Reserved

## Part VII: Architecture Capability Framework

**Modular Structure**  
 Content Framework  
 Extended Guidance  
 Architectural Styles  
 Additional ADM detail

<b>Part I - Introduction</b>
Preface, Executive Overview, Core Concepts, Definitions and Release Notes
<b>Part II - Architecture Development Method</b>
Introduction to ADM
ADM Phase Narratives
<b>Part III - ADM Guidelines and Techniques</b>
Guidelines for Adapting the ADM Process
Techniques for Architecture Development
<b>Part IV - Architecture Content Framework</b>
Content Metamodel
Architectural Artifacts
Architecture Deliverables
Building Blocks
<b>Part V - Enterprise Continuum and Tools</b>
Enterprise Continuum
Architecture Partitioning
Architecture Repository
Tools for Architecture Development
<b>Part VI - Reference Models</b>
Foundation Architecture: Technical Reference Model
Integrated Information Infrastructure Reference Model
<b>Part VII - Architecture Capability Framework</b>
Architecture Board
Architecture Compliance
Architecture Contracts
Architecture Governance
Architecture Maturity Models
Architecture Skills Framework

- A new part in TOGAF 9, derived from the 8.1.1 Resource Base
- Describes the organization, processes, skills, roles and responsibilities to establish and operate an architecture function

TOGAF™

Slide 20 of 37

## Content Framework

- A significant addition to TOGAF
- It provides a detailed model of architectural work products
- It drives for greater consistency in the outputs of TOGAF

Modular Structure  
**Content Framework**  
Extended Guidance  
Architectural Styles  
Additional ADM detail

*Slide 21 of 37* **TOGAF™**

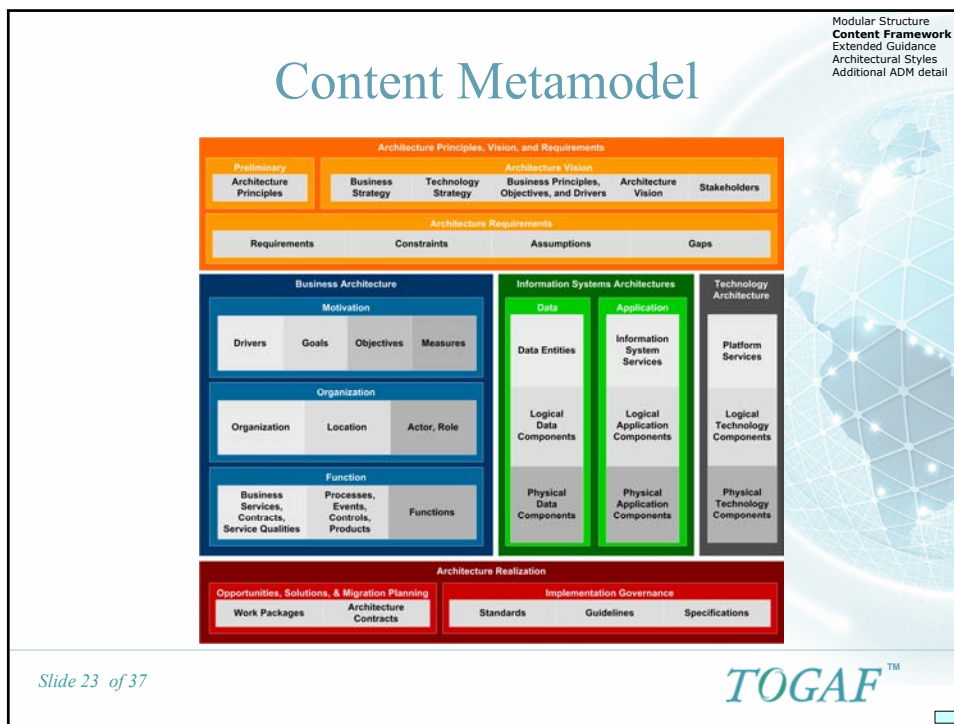
© 2009 The Open Group, All Rights Reserved

## Benefits of the Content Framework

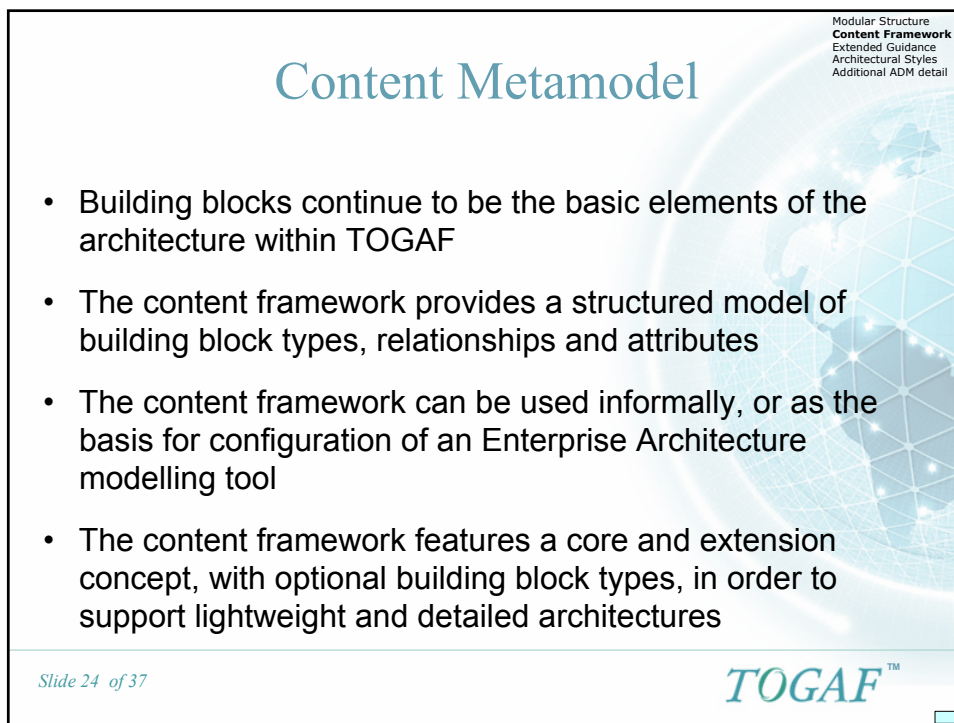
- It provides a comprehensive checklist of architecture outputs
- It promotes better integration of work products if adopted across an enterprise
- It provides a detailed open standard for how architectures should be described

Modular Structure  
**Content Framework**  
Extended Guidance  
Architectural Styles  
Additional ADM detail

*Slide 22 of 37* **TOGAF™**



© 2009 The Open Group, All Rights Reserved



## Extended Guidance on Using TOGAF

Modular Structure  
Content Framework  
**Extended Guidance**  
Architectural Styles  
Additional ADM detail

- TOGAF 9 features an extended set of concepts and guidelines for using TOGAF
- Concepts introduced to support an integrated hierarchy of architectures being developed

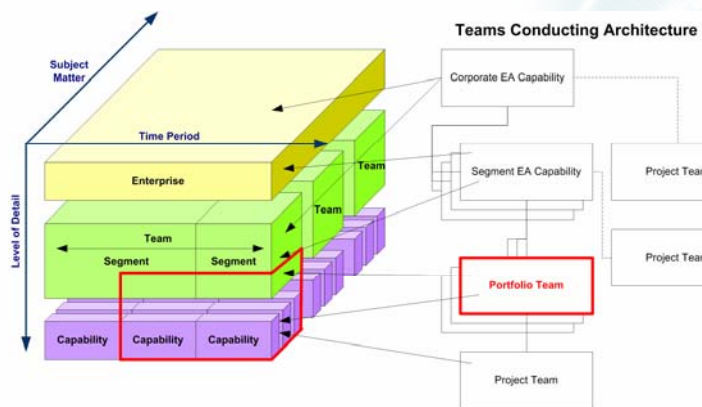
Slide 25 of 37

TOGAF™

© 2009 The Open Group, All Rights Reserved

## Partitioning

Modular Structure  
Content Framework  
**Extended Guidance**  
Architectural Styles  
Additional ADM detail

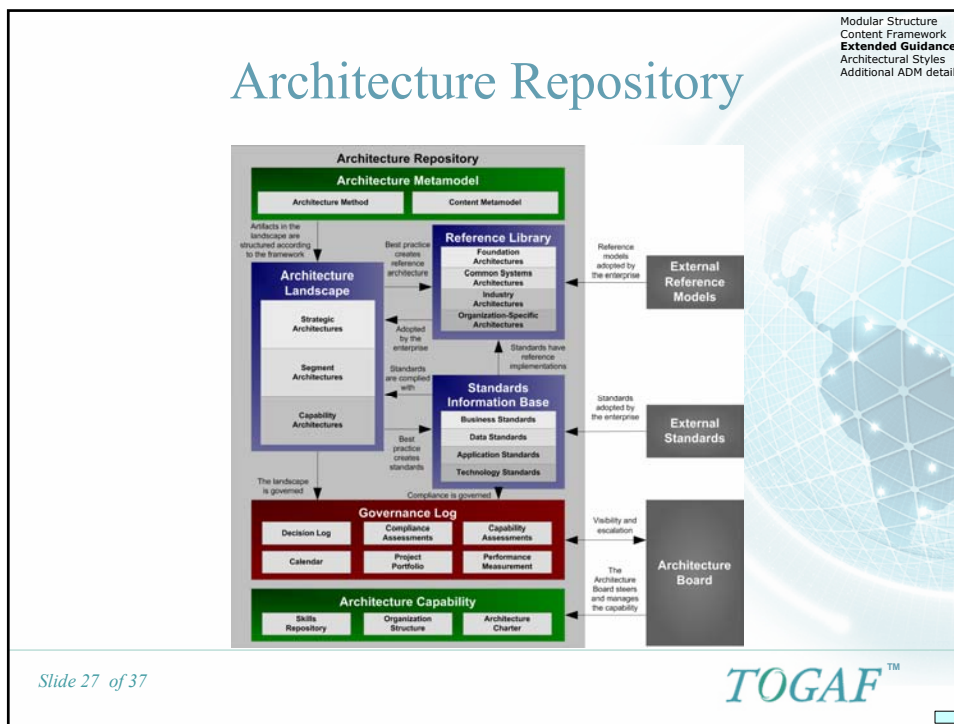


**Allows for management of costs and complexity by dividing up the Enterprise and assigning appropriate roles and responsibilities to each partition**

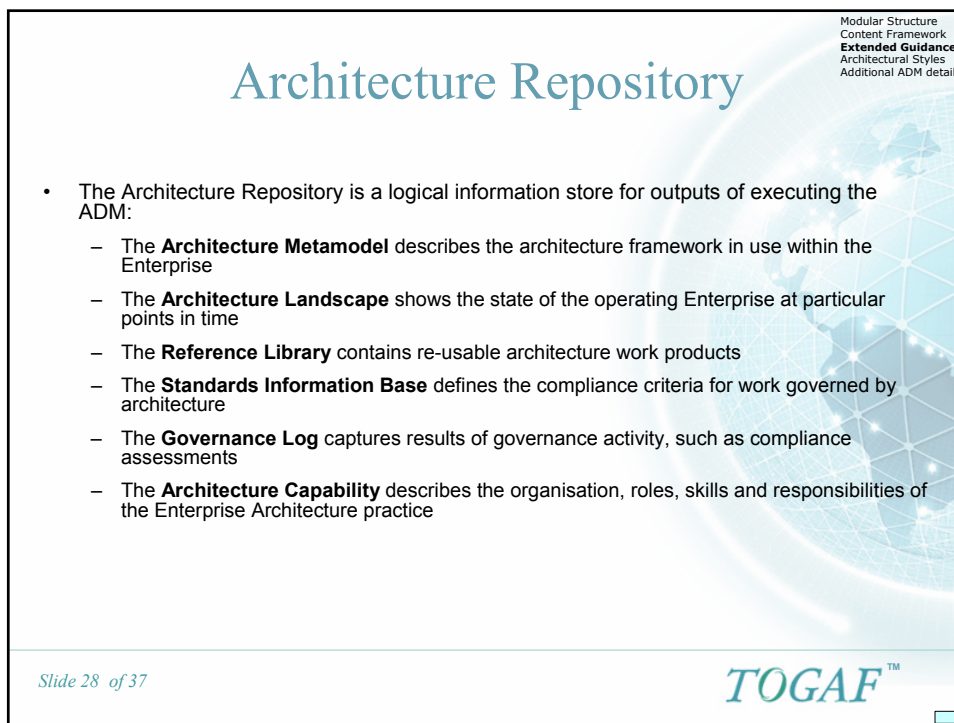
Slide 26 of 37

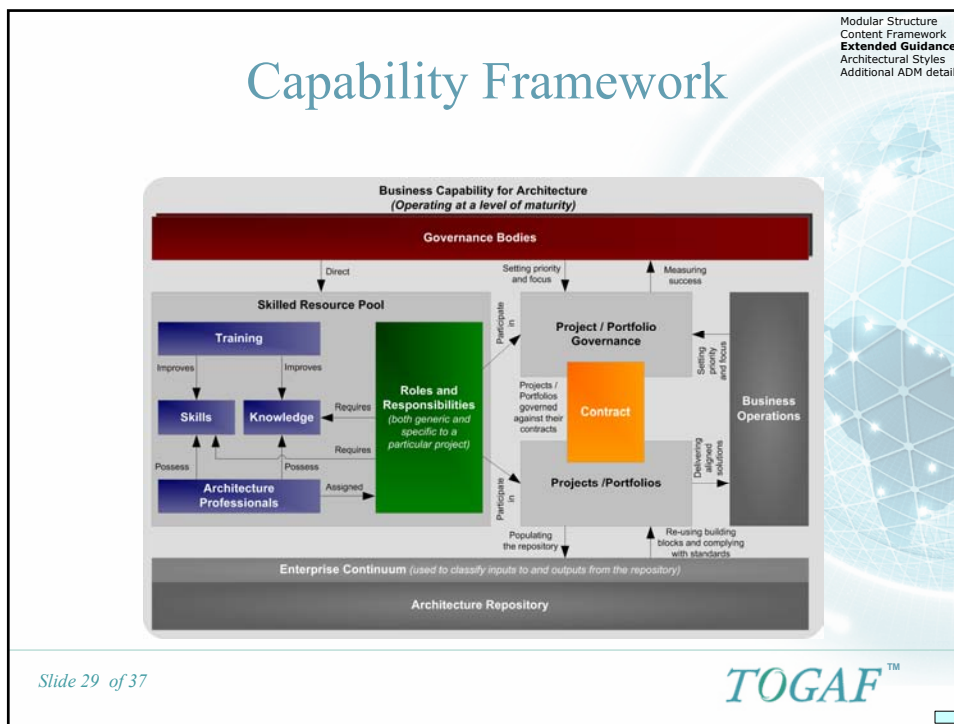
TOGAF™



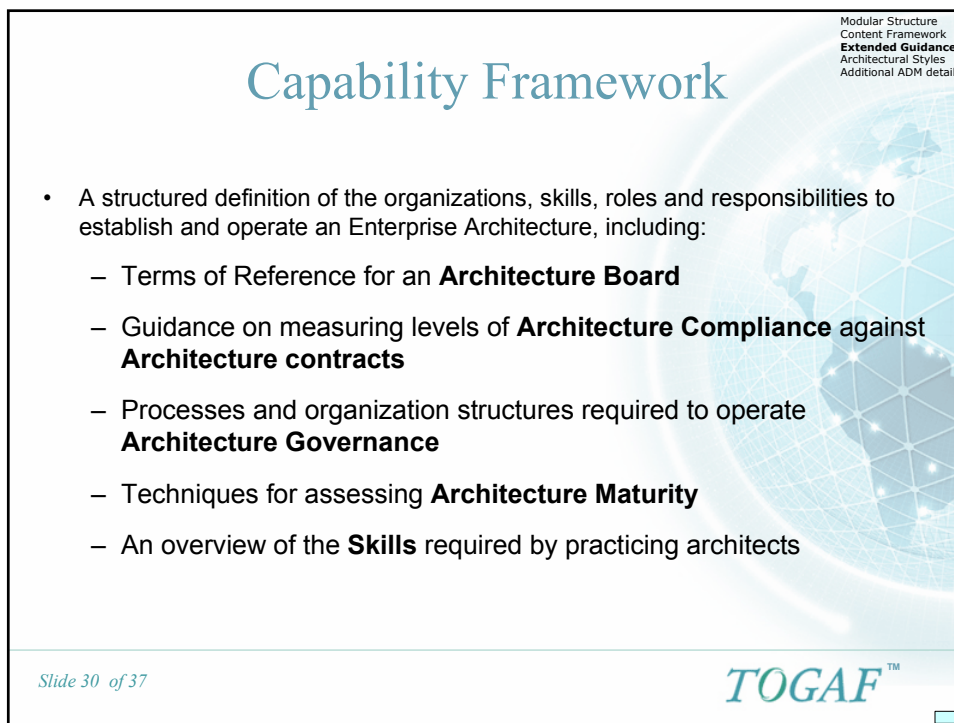


© 2009 The Open Group, All Rights Reserved





© 2009 The Open Group, All Rights Reserved



## Explicit Consideration of Architectural Style

Modular Structure  
Content Framework  
Extended Guidance  
**Architectural Styles**  
Additional ADM detail

- The new Part III: ADM Guidelines and Techniques provides guidance on how to apply the ADM in specific situations
  - Applying Iteration to the ADM
  - Applying the ADM at different Enterprise Levels
  - Security Architecture and the ADM
  - Using TOGAF to define and govern SOA

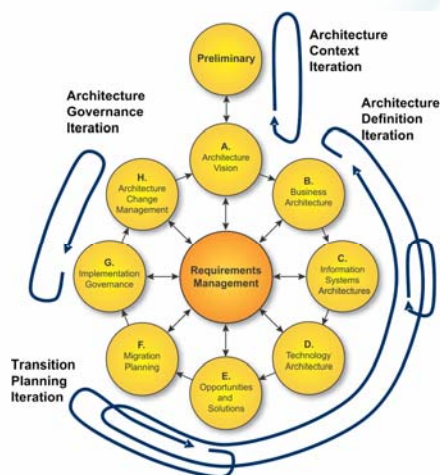
Slide 31 of 37

TOGAF™

© 2009 The Open Group, All Rights Reserved

## Applying Iteration to the ADM

Modular Structure  
Content Framework  
Extended Guidance  
**Architectural Styles**  
Additional ADM detail



Slide 32 of 37

TOGAF™

## Applying the ADM at Different Levels

Modular Structure  
Content Framework  
Extended Guidance  
**Architectural Styles**  
Additional ADM detail

The diagram illustrates the TOGAF Architecture Development Method (ADM) phases and their application across different levels of architecture. The central hub is 'Requirements Management', surrounded by phases: Preliminary, A (Architecture Vision), B (Business Architecture), C (Information Systems Architectures), D (Technology Architecture), E (Opportunities and Solutions), F (Migration Planning), G (Implementation Governance), and H (Architecture Change Management). Arrows point from these phases to four levels: 'Architecture Practice and Context' (Preliminary), 'Strategic Architecture' (A, B, C, D), 'Domain Architecture(s)' (A, B, C, D, E, F, G, H), and 'Solution Architecture(s)' (A, B, C, D, E, F, G, H). On the right, three detailed diagrams show the ADM structure for Strategic, Domain, and Solution Architecture, with arrows indicating how the central phases map to these levels.

Slide 33 of 37

**TOGAF™**

© 2009 The Open Group, All Rights Reserved

## Additional ADM Detail

Modular Structure  
Content Framework  
Extended Guidance  
Architectural Styles  
**Additional ADM detail**

- The Preliminary Phase features extended guidance on establishing the Enterprise Architecture framework
- Phase E and F feature a more detailed and robust method for defining and planning enterprise transformation based on the principles of capability planning

Slide 34 of 37

**TOGAF™**


## Additional ADM Detail

Modular Structure  
Content Framework  
Extended Guidance  
Architectural Styles  
**Additional ADM detail**

- Across the ADM, changes have been made to ensure that appropriate consideration is given to the Business, Information Systems and Technology aspects of change (and not just Technology)
- More guidance has been added to align TOGAF with related management frameworks, such as ITIL

Slide 35 of 37

TOGAF™




© 2009 The Open Group, All Rights Reserved

## Summary

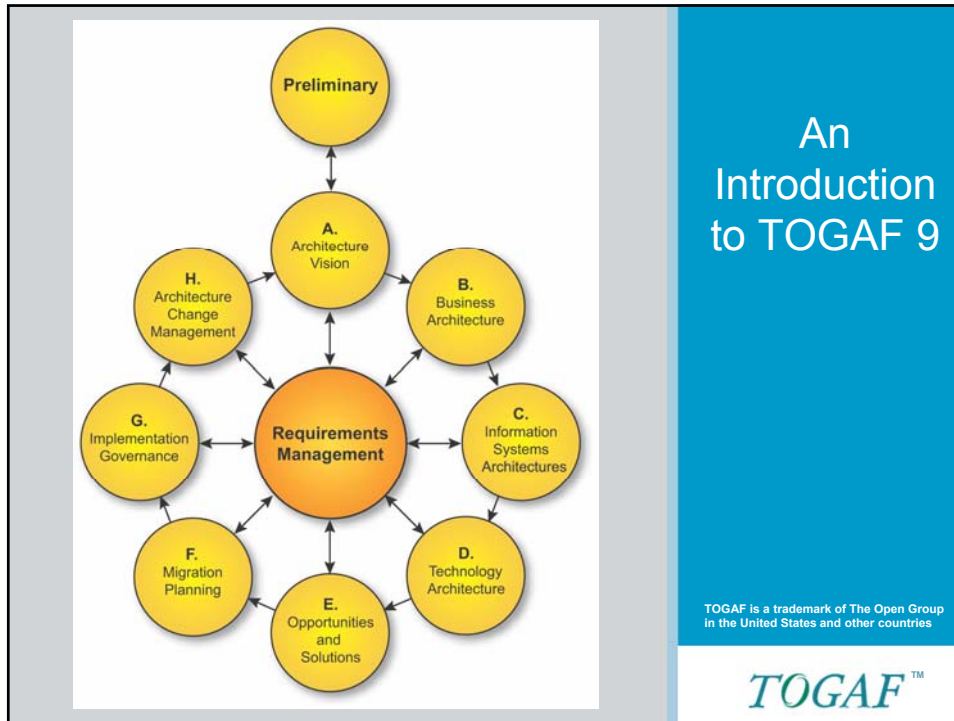
- TOGAF 9 is an evolution
- TOGAF 9
  - Builds a rich foundation for business execution
  - Enables business solutions from solidly defined architectural capabilities
  - Unites the business objectives with the IT capabilities, creating a platform for significant added value.

Slide 36 of 37

TOGAF™







© 2009 The Open Group, All Rights Reserved