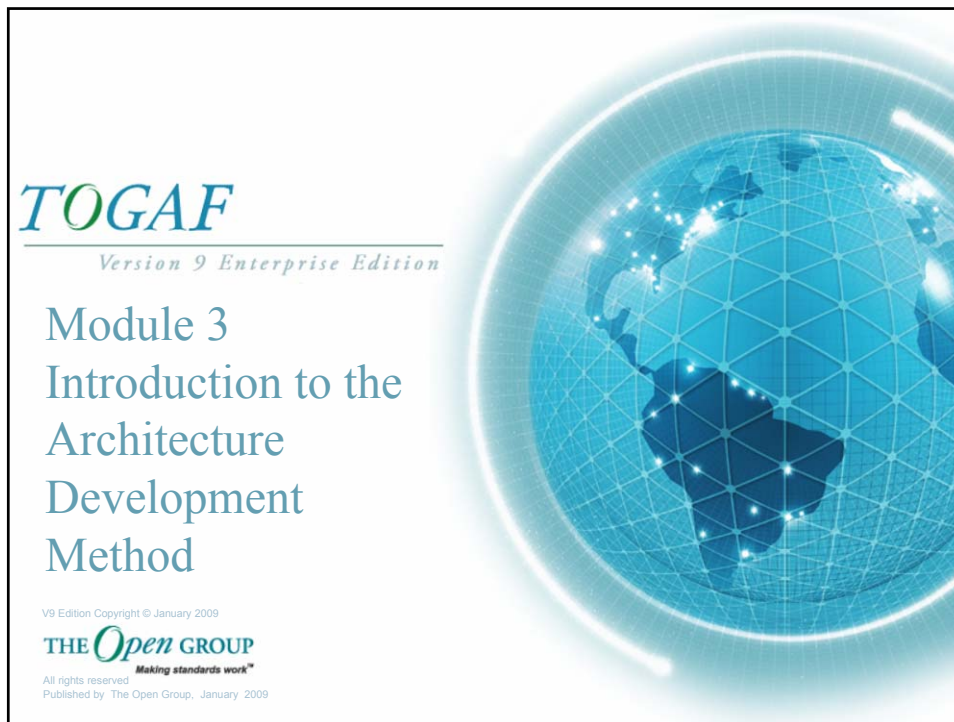
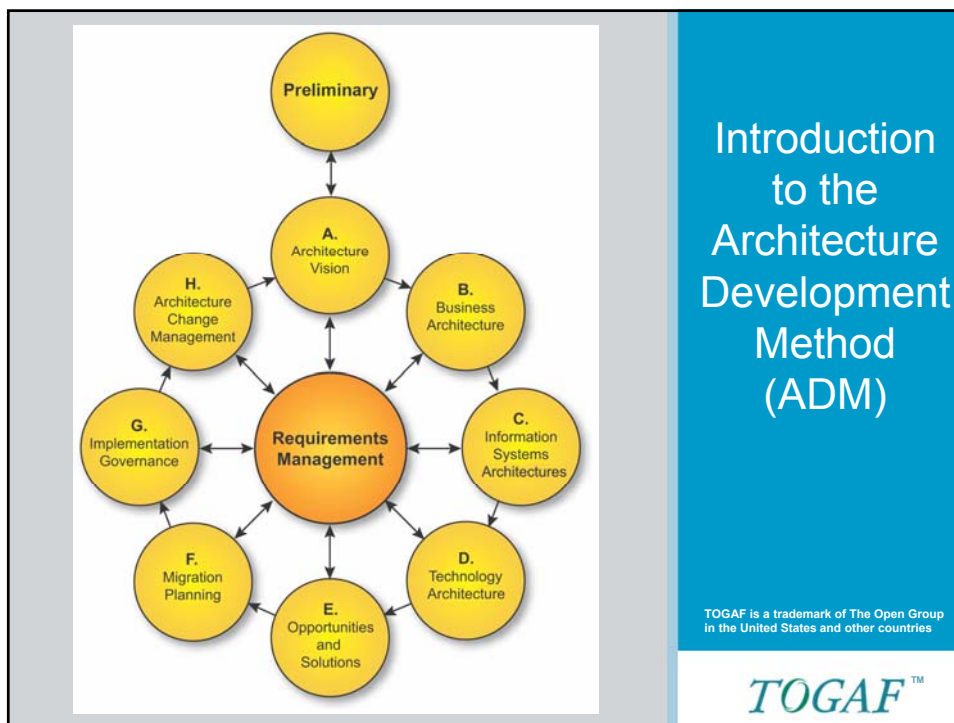


TOGAF Standard Courseware V9 Edition



© 2009 The Open Group, All Rights Reserved



TOGAF Standard Courseware V9 Edition

Module Objectives

The objectives of this module are to describe:

- The TOGAF ADM
- Its relationship to other parts of TOGAF
- The phases of the ADM
- How and why to adapt the ADM
- How to scope an architecture activity

Slide 3 of 14

TOGAF™

© 2009 The Open Group, All Rights Reserved

What is the TOGAF ADM?

- The ADM forms the core of TOGAF
- The result of contributions from many architecture practitioners
- It is specifically designed to address enterprise's business and IT needs by providing:
 - A set of architecture views (business, data, application, technology)
 - Guidelines on tools for architecture development
 - A set of recommended deliverables
 - Links to practical case studies
 - A method for managing requirements

Slide 4 of 14

TOGAF™

TOGAF Standard Courseware V9 Edition

Architecture Development Method – Process

- The ADM is an iterative process:
 - Over the whole process
 - Between phases
 - Within phases
- For each iteration, re-consider:
 - Scope
 - Detail
 - Schedules, milestones

Slide 5 of 14

TOGAF™

© 2009 The Open Group, All Rights Reserved

Architecture Development Method – Process

- Consider assets from:
 - Previous iterations
 - Marketplace, according to availability, competence, and value:
 - Other frameworks
 - Systems models
 - Vertical Industry models

Slide 6 of 14

TOGAF™

TOGAF Standard Courseware V9 Edition

Relationship to other Parts of TOGAF

The ADM forms the core

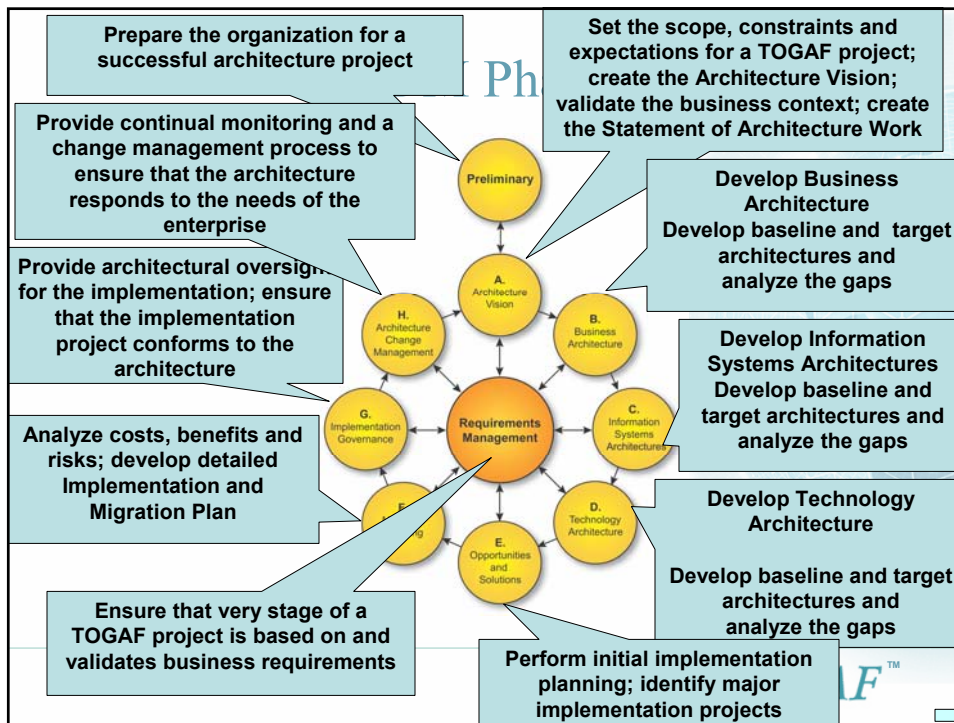
It is supported by the other main parts of TOGAF:

- **ADM Guidelines and Techniques**
 - Set of guidelines, templates, checklists
- **Architecture Content Framework**
- **The Enterprise Continuum**
 - Framework and context for architecture assets including descriptions, models and patterns
- **TOGAF Reference Models**
- **The Architecture Capability Framework**

Slide 7 of 14

TOGAF™

© 2009 The Open Group, All Rights Reserved



TOGAF Standard Courseware V9 Edition

ADM Phase Steps Example

The diagram illustrates the ADM Phase Steps Example. It features a central orange circle labeled 'Requirements Management'. Surrounding this central circle are eight yellow circles, each representing a phase: A. Architecture Vision, B. Business Architecture, C. Information Systems Architectures, D. Technology Architecture, E. Opportunities and Solutions, F. Migration Planning, G. Implementation Governance, and H. Architecture Change Management. Above the central circle is a yellow circle labeled 'Preliminary'. Arrows indicate bidirectional relationships between the central circle and each of the eight surrounding phases, and between adjacent surrounding phases. A callout box on the right, titled 'Phase B Steps', contains a list of nine steps and a note about adapting the order of steps.

Phase B Steps

9. Create Architecture Definition Document
8. Finalize the Business Architecture
7. Conduct formal stakeholder review
6. Resolve impacts across the Architecture Landscape
5. Define roadmap components
4. Perform gap analysis
3. Develop Target Business Architecture Description
2. Develop Baseline Business Architecture Description
1. Select reference models, viewpoints, and tools

The order of the steps should be adapted to the situation.
In particular you should determine whether it is appropriate to do the Baseline Business Architecture or Target Business Architecture development first

TOGAF™

Slide 9 of 14

© 2009 The Open Group, All Rights Reserved

ADM Inputs and Outputs

- TOGAF defines a number of input and output deliverables for each phase
 - These are suggestions and need not be followed exactly
 - Output of an early phase may be modified in a later phase
 - Version numbers are used to manage the output
 - A convention is used to illustrate the evolution of deliverables
 - 0.1 – a high level outline deliverable
 - 1.0 – a formally reviewed detailed deliverable

TOGAF™

Slide 10 of 14

TOGAF Standard Courseware V9 Edition

Adapting the ADM

- Generic methodology intended for variable:
 - Geographies
 - Vertical sectors
 - Industry types
- Usable with deliverables of other frameworks such as Zachman, DODAF, ...
- It is usual to modify or extend the ADM to suit specific needs

Slide 11 of 14

TOGAF™

© 2009 The Open Group, All Rights Reserved

Scoping the Architecture Activity

- There are four dimensions in which scope may be limited:
 - Enterprise scope or focus
 - Architecture domains
 - Vertical scope (level of detail)
 - Time periods (Project Schedule)

Slide 12 of 14

TOGAF™

TOGAF Standard Courseware V9 Edition

Summary

- The ADM is a comprehensive, general method
- It recommends a sequence for various phases and steps involved in developing an architecture
- It is an iterative method
- It draws on the other parts of TOGAF for assets and processes
- It can be used with other deliverables from other frameworks

Slide 13 of 14

TOGAF™

© 2009 The Open Group, All Rights Reserved

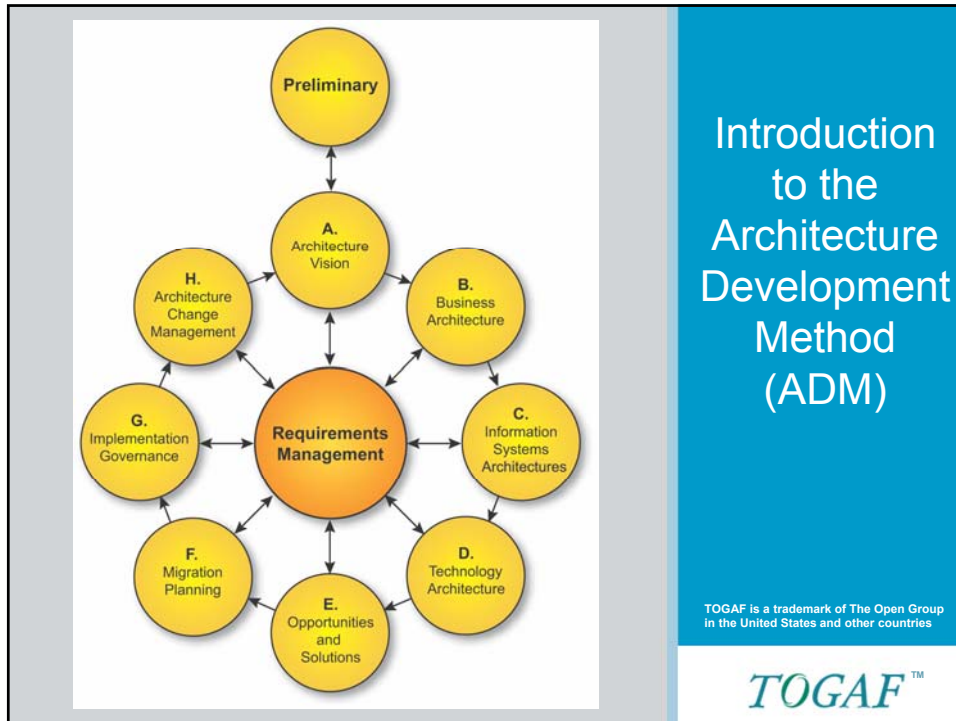
Test Yourself Question

- Q. The following statements describe the phases of the ADM, *except* ?
- A. They are cyclical.
 - B. They are iterative.
 - C. Each phase refines the scope.
 - D. Each phase is mandatory.
 - E. The phases cycle through a range of architecture views.

Slide 14 of 14

TOGAF™

TOGAF Standard Courseware V9 Edition



© 2009 The Open Group, All Rights Reserved